



ENERFREES
Window & Wall Systems

AWNING WINDOW

S-EF1070

HIGH PERFORMANCE THERMAL AWNING WINDOW
EAW-1071



FRAME

FRAME DEPTH

70mm (2 3/4")

MAX SINGLE WINDOW WIDTH

1600mm (63')

MAX SINGLE WINDOW HEIGHT

1980mm (78')

GLAZING

Insulated, Tempered Glass, Low-E, Argon Filled, Warm-Edge Spacer, 3A Molecular Sieve

Thickness

Double Glazing

5mm+12mm+5mm
(OVERALL = 22mm (7/8"))

6mm+12mm+6mm
(OVERALL = 24mm (1"))

8mm+12mm+8mm
(OVERALL = 28mm (1-1/8"))

Triple Glazing

5mm+12mm+5mm+12mm+5mm
(OVERALL = 39mm (1-1/2"))

6mm+12mm+6mm+9mm+6mm
(OVERALL = 39mm (1-1/2"))

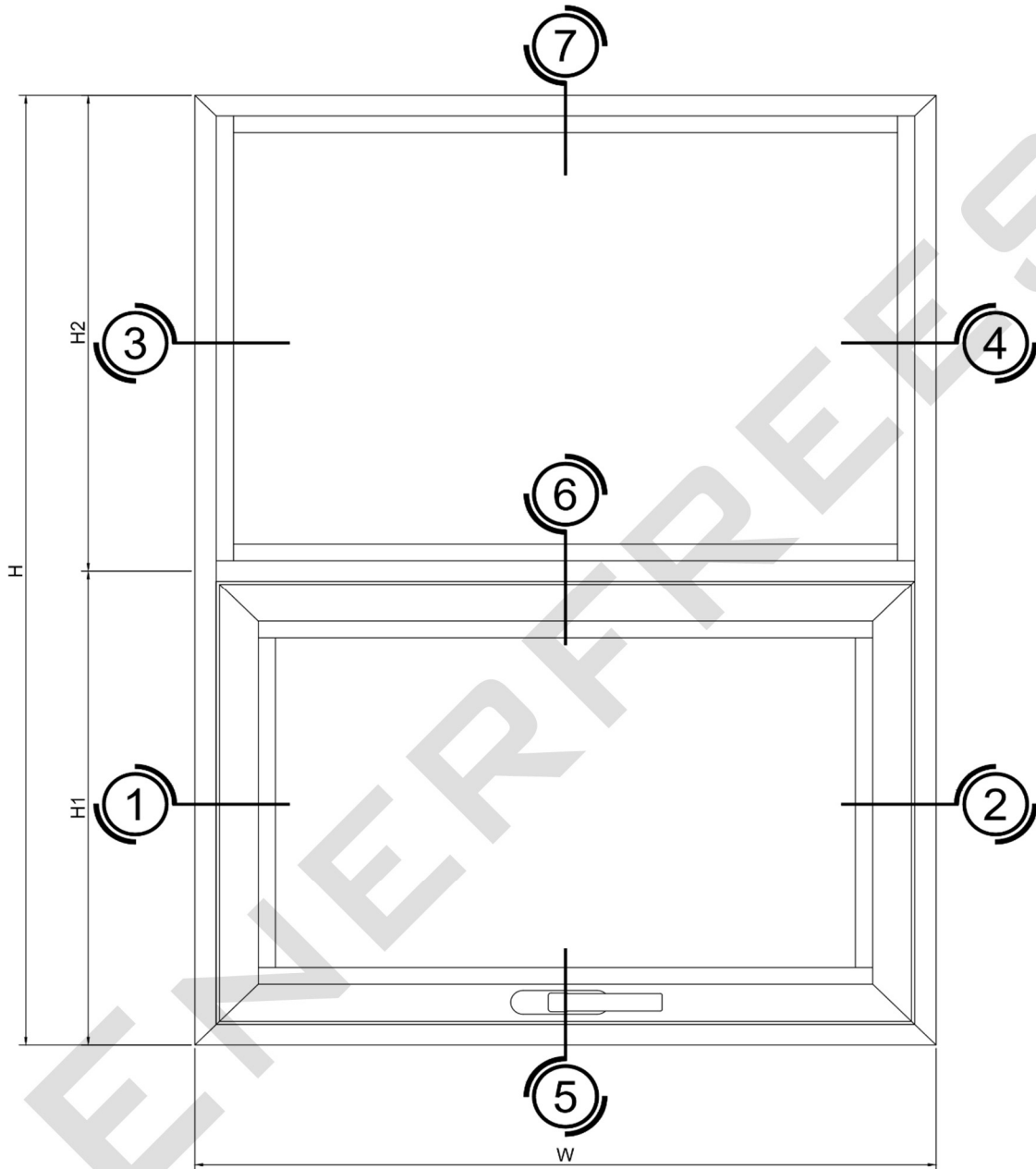
6mm+12mm+6mm+12mm+6mm
(OVERALL = 42mm (1-5/8"))



ENERFREES
Window & Wall Systems

AWNING WINDOW

S-EF1070



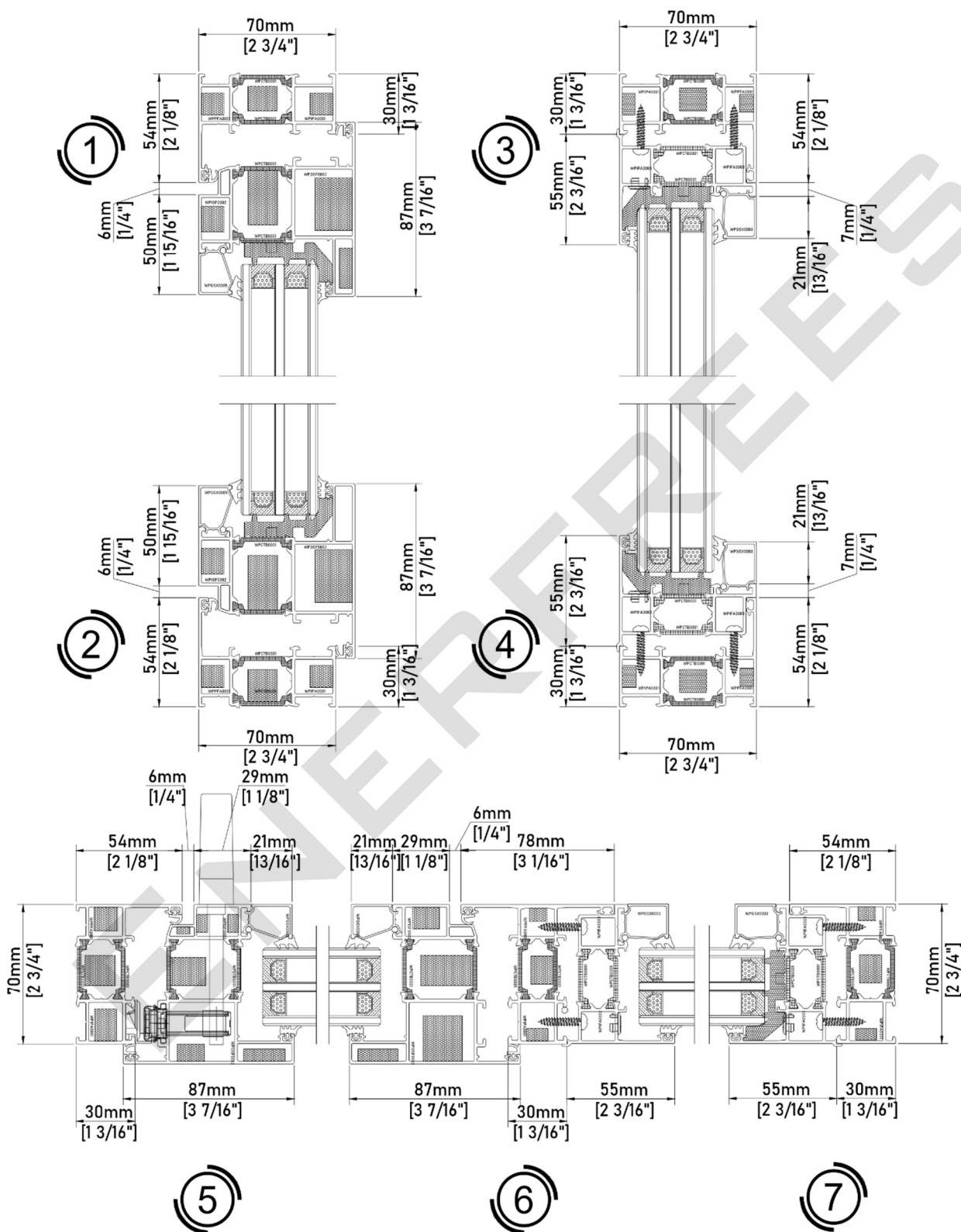


ENERFREES
Window & Wall Systems

AWNING WINDOW

S-EF1070

DETAILS:



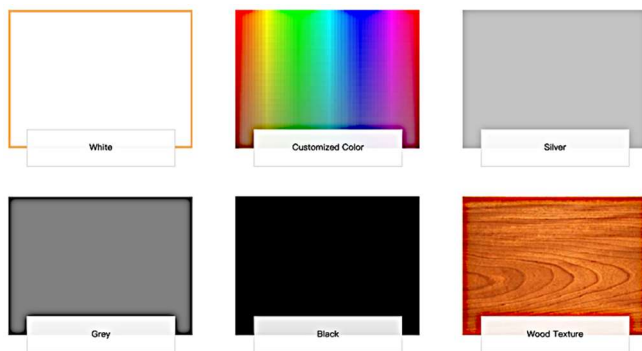


FENESTRATION

Commonly used in high-rise and mid-rise buildings to meet increased loading requirements and limits on deflection, and in buildings where frequent and extreme use of the fenestration products is expected.

FINISH

POWDER COATED. Powder coating is a polyester based coating that uses uniformly sized micro-beads of polyester, electrostatically charged to adhere to base materials. The coating is thick like an epoxy paint, but because it is electrostatically charged and then baked/cured onto the base material, it doesn't flake or peel like paint or epoxy. The color is softer than comparable colors and the depth of the coating is larger.



ADVANTAGE:

- Wide selection of colours
- Texturized finish is an option

ENERFREES HIGH-PERFORMANCE THERMAL BREAK (PA 66 OR NYLON 66)

Polyamide 66 (PA66) is a type of nylon. PA 66 is made of two monomers each containing 6 carbon atoms, hexamethylenediamine and adipic acid.

Melting point:	268.8 °C
Formula:	(C ₁₂ H ₂₂ N ₂ O ₂) _n
Density:	1.31 g/cm ³
Boiling point:	452.1 °C
PubChem CID:	3032893

General Characteristic:

- High strength and stiffness at high temperature
- Good impact strength, even at low temperature
- Good abrasion and wear resistance
- Good fatigue resistance
- High water absorption and water equilibrium content limits the usage
- Low dimensional stability



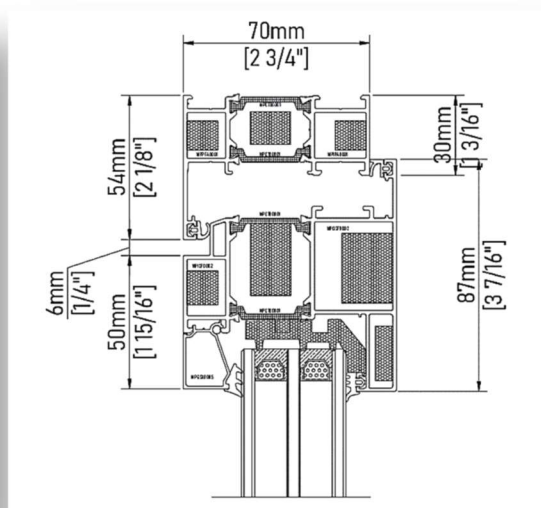
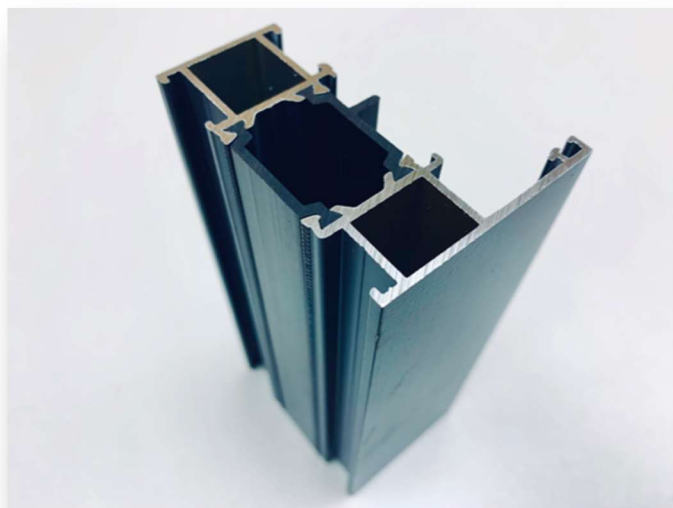
ENERFREES
Window & Wall Systems

AWNING WINDOW

S-EF1070

FRAME DESCRIPTION:

High Performance Thermally broken window system with frame depth of 70mm (2 3/4") frame section.



PARTS AND ACCESSORIES

<p>WPPFA0001 – PRIME FRAME ASSEMBLY (PFA) 6063-T5</p>	 54mm [2 1/8"] 70mm [2 3/4"] 30mm
<p>WPOPA0001 – OUTSIDE PRIME ALUMINUM (OPA) 6063-T5</p>	54mm [2 1/8"]
<p>WPIPA0001 – INSIDE PRIME ALUMINUM (IPA) 6063-T5</p>	30mm [1 3/16"]



ENERFREES
Window & Wall Systems

AWNING WINDOW

S-EF1070

WPCTB0001 – C THERMAL BREAK (CTB) NYLON 66 (PA66)	
WPYTB0001 – Y THERMAL BREAK (YTB) NYLON 66 (PA66)	
WPMFA0001 – MULLION FRAME ASSEMBLY (MFA)	
WPOMA0001 – OUTSIDE MULLION ALUMINUM (OMA) 6063-T5	
WPIMA0001 – INSIDE MULLION ALUMINUM (IMA) 6063-T5	



ENERFREES
Window & Wall Systems

AWNING WINDOW

S-EF1070

<p>WPSFA0002 – SASH FRAME ASSEMBLY (SFA)</p>	
<p>WPOSF0002 – OUTSIDE SASH FRAME (OSF) 6063-T5</p>	
<p>WPISF0002 – INSIDE SASH FRAME (ISF) 6063-T5</p>	
<p>WPFAA0002 – FLIP ALUMINUM ASSEMBLY (FAA) 6063-T5</p>	
<p>WPIFA0002 – INSIDE FLIP ASSEMBLY (IFA) 6063-T5</p>	



ENERFREES
Window & Wall Systems

AWNING WINDOW

S-EF1070

WPOFA0002 – OUTSIDE FLIP ASSEMBLY (OFA) 6063-T5	
--	--

GLASS STOPS	
WPGSX0001 – GLASS STOP (GSX) 6063-T5	
WPGSX0002 – GLASS STOP (GSX) 6063-T5	
WPGSX0003 – GLASS STOP (GSX) 6063-T5	
WPGSX0004 – GLASS STOP (GSX) 6063-T5	



ENERFREES
Window & Wall Systems

AWNING WINDOW

S-EF1070

<p>WPGSX0005 – GLASS STOP (GSX) 6063-T5</p>	
---	--

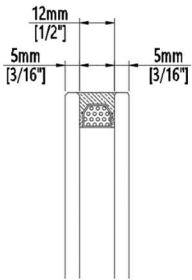
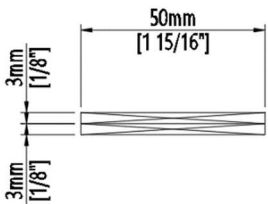
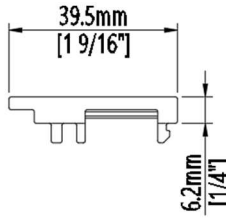
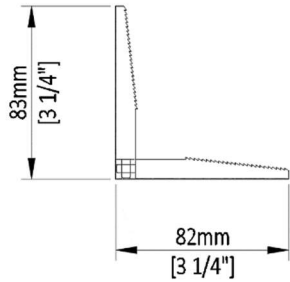
GLAZING (INSULATED GLASS UNITS) Tempered, Low-E, Argon Filled, Warm-Edge Spacer, 3A Molecular Sieve	
<p>GITPA0005 - TRIPLE PANE ASSEMBLY (TPA)</p>	
<p>GIDPA0008 - DOUBLE PANE ASSEMBLY (DPA 8MM)</p>	



ENERFREES
Window & Wall Systems

AWNING WINDOW

S-EF1070

GIDPA0006 - DOUBLE PANE ASSEMBLY (DPA 5MM)	
WAGSB0001 - GLASS SETTING BLOCK (GSB) PVC	
WAGSB0002 - GLASS SETTING BLOCK (GSB) PVC	
WAGSB0002 - GLASS CORNER SETTING BLOCK (CSB) PVC	

SEALS

EPDM rubber is a high-density synthetic rubber used for outdoor applications and other spaces in need of tough, versatile parts.



ENERFREES
Window & Wall Systems

AWNING WINDOW

S-EF1070

WSIGX0001 - INTERIOR GASKET (IGX) EPDM RUBBER	
WSEGX0002 - EXTERIOR GASKET (EGX) EPDM RUBBER	
WSIGX0003 - INTERIOR GASKET (IGX) EPDM RUBBER	
WSEGX0004 - EXTERIOR GASKET (EGX) EPDM RUBBER	
WSEGX0005 - EXTERIOR GASKET (EGX) EPDM RUBBER	
WSMFX0001 – MID-FRAME GASKET (MFG) EPDM RUBBER	

OTHER COMPONENT/S

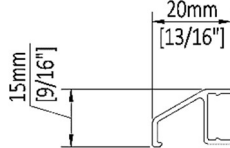
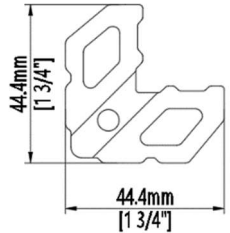
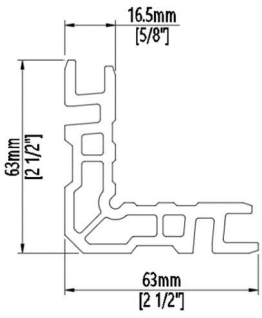
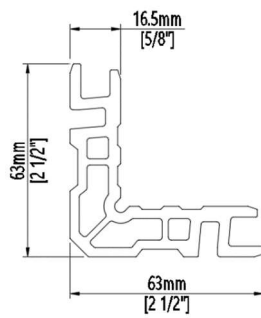
WADXX0001 – EXTERIOR DRAIN COVER (DXX) PVC	
--	--



ENERFREES
Window & Wall Systems

AWNING WINDOW

S-EF1070

WAWBX0001 – WEATHER BAR (WBX) 6063-T5	
WPCKX0001 – CORNER JOINT KEY (CJK) STAINLESS STEEL	
WPCJB0001 – CORNER JOINT BLOCK D-3/4" (CJB) 6063-T5	
WPCJB0002 – CORNER JOINT BLOCK D-1/2" (CJB) 6063-T5	

PERIMETER EXTENDERS



ENERFREES
Window & Wall Systems

AWNING WINDOW

S-EF1070

PFE6X0001 – PF EXTENDER 6063-T5	
PFE6X0002 – PF EXTENDER 6063-T5	
PFBMX0001 – PF BRICK MOULD 6063-T5	
WFIFX0001 – INJECTED FOAM INSULATION (IFX)	

HARDWARE

ONE-CLICK HANDLE E-HOC HANDLE	
----------------------------------	--

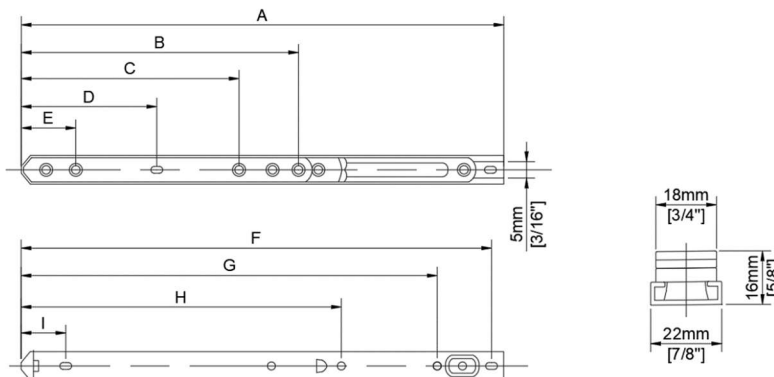


ENERFREES
Window & Wall Systems

AWNING WINDOW

S-EF1070

FRICTION HINGE
E-FHTB



GENERAL SPECIFICATION

I. PACKAGE INCLUDES

Manufacturing includes labour, materials, and services for the complete fabrication and assembly of EAW1070 Awning window system. Fabrication to include all necessary accessories and components, anchors, joint blocks, drain cover, seal rubbers, hardware, and sealants as required in the purchase agreement.

II. PACKAGE EXCLUDES

Structural installation or provision, framing, interior and exterior trims replacement/repairs, concrete masonry, brick restoration, final cleaning, protection, and/or any related work as specified.

III. PERFORMANCE AND QUALITY STANDARD REQUIREMENT AND ASSURANCE

Enerfree's EF1070 Awning Window supplied to client under this specification must comply to the performance standard requirements and test report from an independent testing laboratory certifying compliance shall be given upon request by the owner/architect/contractor.

Test Required: AAMA/WDMA/CSA 101/I.S.2/A440-17 NAFS – North American Fenestration Standard / Specification for windows, doors and skylights and A440S1:19 Canadian Supplement to AAMA/WDMA/CSA 101/I.S.2/A440-17 NAFS - North American Fenestration Standard / Specification for windows, doors and skylights.

IV. MANUFACTURING REFERENCES



An approved shop drawing shall be provided for manufacturing reference and Enerfree's pricing. Enerfree's pricing and drawing shall be signed back to finalize manufacturing and fabricating details.

V. ALUMINUM EXTRUSION

All extruded aluminum sections shall be 6063-T5 alloy or equivalent.

VI. FASTENERS

Fasteners shall be stainless steel or as required.

VII. FABRICATION/MANUFACTURING

Window will be fabricated according to the approved shop drawings. All joints will be assembled tight using manufactures provided assembly machines to comply with quality standard and assurance to carry out the product design performance.

VIII. INSTALLATION

Enerfree's products that will be installed shall conform with the manufacturer's instructions and should comply with approved shop drawings. The work shall be performed by qualified or certified installer using proper equipment to carry out necessary, proper, and efficient installation in a professional manner.

IX. PROTECTION

Exposed aluminum finished surface shall be protected from contamination of mortar, concrete, paint, mud, soil, grease, sealant or caulking compound, and any other harmful substance that can cause damage to surface finish from prolong adhesion.

X. CLEANING

Provisional cleaning shall perform primary clear-out after installation and final cleaning shall be executed by the project owner in accordance with the general conditions listing methods outlined in AAMA 609 and 610-02.

AWNING INTEGRATION TO FIXED WINDOW





ENERFREES
Window & Wall Systems

AWNING WINDOW

S-EF1070

Enerfree EAW-1070 is unlimited to integrate different operations and functionality to fixed window with custom sizes within the minimum/maximum width and height limits as specified.

ENERFREES